



Swiss Downstream Line (SDL)

Joint engineering project by the Swiss partnership for the plastic packaging industry

A harmonious foursome

IMD AG and its Swiss partners PackSys Global AG, Hapa AG and M. Tanner AG presented their first joint project at the product launch at an international customer event in Brügg, a town located in the idyllic surroundings of Lake Biel in the Swiss Jura mountains. The two-day event titled “Swiss partnership drives innovation” started with an evening get-together, opened with a welcoming speech by Matthias Hermle, CEO of IMD AG.



F.I.t.r.: Marco Tanner, CEO M.Tanner AG, Beat Rupp, CEO Hapa AG, Matthias Hermle, CEO IMD AG and Manfred Zurkirch, CEO PackSys Global AG

The following day was dedicated to launching the new products; the day began with the IMD AG bottle, closure, preform and barrier coating testing specialist presenting the new vision control center V5. The system features a robust state-of-the-art touchscreen displaying a complete overview of production, system setup, inspection and statistical data in a fully integrated machine interface. Deviations and alarms make immediate corrective action possible in this intuitive user interface.

Swiss Downstream Line – IMDvista & PackSys Global

The vision control center V5 system is part of Swiss Downstream Line (SDL), a complete downstream system for closure production including slitting, folding and inspection. IMD vista technology joined forces with PackSys Global in creating SDL. Ueli Kobel, PackSys Global AG, Group Leader Sales Team

Caps and Closures, identified the challenges by merging two HMI's of different brands with the electrical components and switching some of the size parts with the known portfolio, while keeping the core process technology, major optional process and packing features the same. The decision for a post-moulding system came about from the strong request for slit tamper evidence (TE) bands due to reproducibility; all of the closures were cut by one knife, creating a combination with a folded TE band and easily adjustable breaking performance such as on materials, neck design or carbonisation are seen also as major advantages on today beverage closures. The separation line between cap and TE band is thinner, lowering the risk on contamination in the thread area together with easier first opening detection and an extended drop zone for the TE band. A spark tester and camera system on a vacuum conveyor belt are integrated to the slitting and folding machine, and the system includes electrical control. The Swiss Downstream Line is available in three sizes – 800ppm, 1,200ppm and 2,000ppm.

IMDvista Closure Digital Print (CLDP) & Hapa AG

Hapa AG is specialised in printing solutions; Peter Schkoda, Head of Sales FMCG, explained the IMD vista Closure Digital Print (CLDP) system. IMD vista's Waterfall Sorter, vacuum conveyor and vision system for pretreatment, and digital UV injection inside



Closure Digital Print (CLDP)

redcube plus from Hapa AG are further examples of know-how and technology sharing in action. The redcube plus, a fully digital piezo inkjet printing module, uses drop-on-demand technology and is scalable to up to seven colors. Integrated in the CLDP system, it prints in high-quality CMYK on 1,500 closures per minute. This includes fast changeover times in design formats, giving customers a high level of flexibility. The redcube plus includes an automatic cleaning and conserving system. The CLDP system has a small footprint.

Hapa Inks are compliant with the Nestlé positive list in association with the Swiss ordinance on printing inks, EuPIA (European printing ink Association), FDA (Food and Drug Administration), CFIA (Canadian Food Inspection Agency) and REACH (Regulation of the European Parliament).

IMDvista PECO Lux presented by Matthias Hermle was another highlight at the product launch. This patent-pending inline preform process monitoring system requires no additional space or perform orientation, making it easy to



Preform Monitoring PECO Lux

integrate into existing production lines. The camera-based testing system registers quality drifts and colour variations in preforms in continuous mode. Smart software based on self-learning functions makes the system easy to operate. Preform inspection provides new perspectives in smart, cost-saving inspection procedures on preform production lines.

IMDvista PECO – Preform testing system & M.Tanner AG

IMDvista worked together with Swiss-based M. Tanner AG preform handling specialists on developing the IMDvista Peco preform testing system for inline and offline inspection. The significant feature of this inspection system is the vision system with a belt conveyor, no star wheels required. Product changes are quick and simple as there are no size parts.

After the product launch, visitors took an opportunity to take a tour around the production halls at IMD and the wide variety of products in the company's range. This also included the IMDvista TWIX double conveyor study concept, with an anonymous questionnaire for visitors to give their own ideas and suggestions – customer relations take very high priority at IMD vista. All four companies were extremely satisfied with the event, and especially the Swiss partnership.



Vision Control Center V5

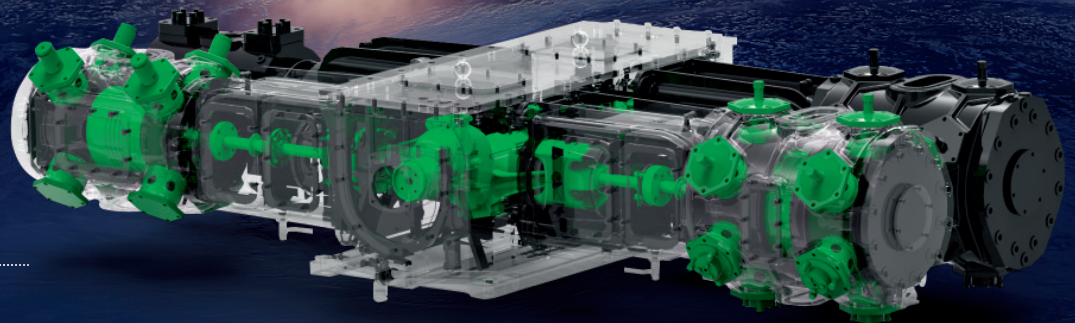
The PETplanet insider team was very pleased to be invited to this international customer event with fascinating personal exchanges, state-of-the-art technology and innovative developments.

www.hapa.ch
www.imdvista.ch
www.mtannerag.ch
www.packsysglobal.com

NEW PET COMPRESSOR RANGE



HORIZON



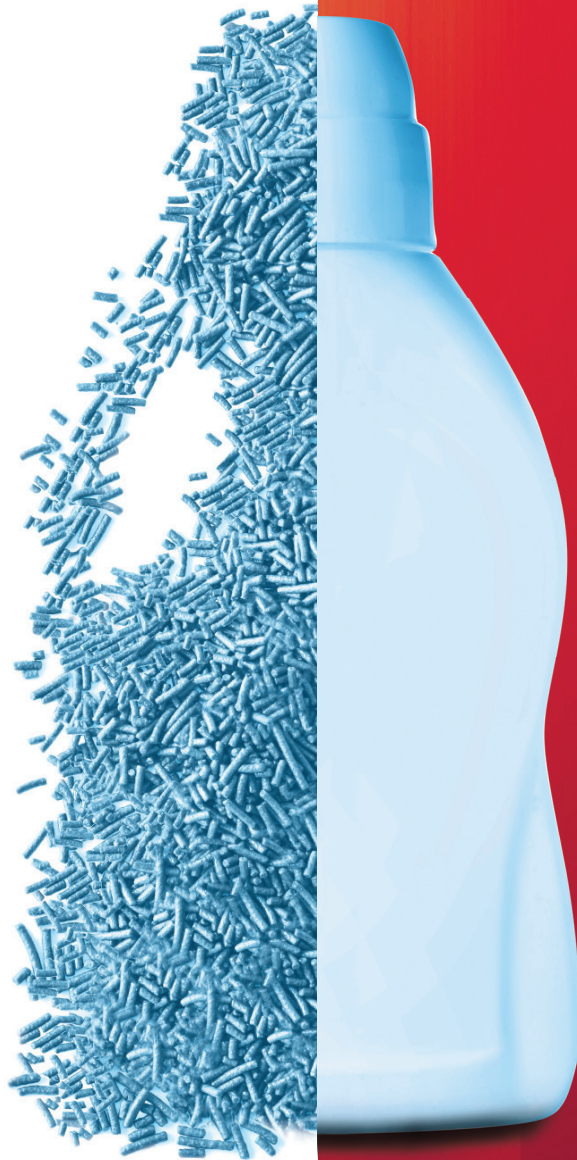
JAPAN PACK - Tokyo, 13-16 Oct.
Hall 1, Stand 507

CBST - Shanghai, 4-6 Nov.
Hall W1, Stand 1C09

BRAU BEVIALE - Nuremberg, 10-12 Nov.
Hall 7A, Stand 318

Learn more:

www.abc-compressors.com



COLOUR

YOUR SUCCESS WITH US

Holland Colours

Halvemaanweg 1, 7323 RW Apeldoorn (global HQ)

P.O. Box 720, 7300 AS Apeldoorn

Tel. +31 (0)55 36 80 700

The Netherlands

E-mail: info@hollandcolours.com

www.hollandcolours.com

Thousands of colour shades, a variety of product formats: liquids, pastes, granulates, microbeads and additive solutions powered by our team of technical experts to ensure your success. Providing you with innovative, sustainable and cost effective solutions, fitting your requirements with our multiple product formats, liquids, pastes, granules and microbeads. Choosing or matching the right colour and application for you. We offer a huge variety of solid and liquid colorants and additives for PET packaging application with nearly four decades of experience: low dosage, high efficiency.